

SPECIFICATIONS

ENGINE

Model	TATA 697 NA
Type	Water cooled, 6-cylinder in-line diesel engine
Engine power	76 PS @ 2200 rpm
Max. torque	25.4 Kgf-m @ 2000 rpm
Batteries	2 X 12V

HYDRAULIC SYSTEM

Main pumps	2 variable displacement axial piston pumps
Flow rate	2 X 115 lpm
Pilot pump	1 gear pump
Flow rate	23 lpm

SUPERSTRUCTURE

Swing speed	11.8 rpm
-------------	----------

RELIEF VALVE SETTINGS

Implement circuit	285 kgf/cm ²
Swing circuit	285 kgf/cm ²
Travel circuit	355 kgf/cm ²
Pilot circuit	40 kgf/cm ²

UNDERCARRIAGE

Travel speed	0 - 4.3 kmph
Max. traction force	7500 kgf
Gradeability	35° (70% continuous)
No. of upper rollers (each side)	1
No. of lower rollers (each side)	6
No. of track shoes (each side)	41
Shoe width	500 mm

SERVICE REFILL CAPACITIES

Hydraulic tank	72.0 ltr
Hydraulic system	126.0 ltr
Fuel tank	250.0 ltr
Engine coolant	11.0 ltr
Engine oil	14.0 ltr
Swing device	3.2 ltr
Travel device (Each side)	3.5 ltr

WEIGHTS AND GROUND PRESSURE

Machine	Operating weight	Ground pressure
Backhoe	11600 kg	0.40 kgf/cm ²
Shovel	11600 kg	0.40 kgf/cm ²

DIGGING FORCE

BACKHOE	SHOVEL
Bucket digging force	7300 kgf
Arm crowd force	5400 kgf
Max. breakout force	7250 kgf
Max. crowd force	7800 kgf

The specifications are subject to change without prior notice. The Electronic displayed may vary from the actual. Machine Please contact our nearest office for latest specifications. Accessories, shown are not part of the standard equipment. Performance of the machine may vary with site and operating conditions. (continued)

Tata Hitachi Construction Machinery Company Private Limited
 Registered Office : Jubilee Building 45 Museum Road Bangalore 560 025 India
 Telephone : +91 80 66953301 02 03 04 05 Fax : +91 80 66953309 25325792
 E-mail : info@tatahitachi.co.in Website : www.tatahitachi.co.in
Toll Free : 1800 3456 500

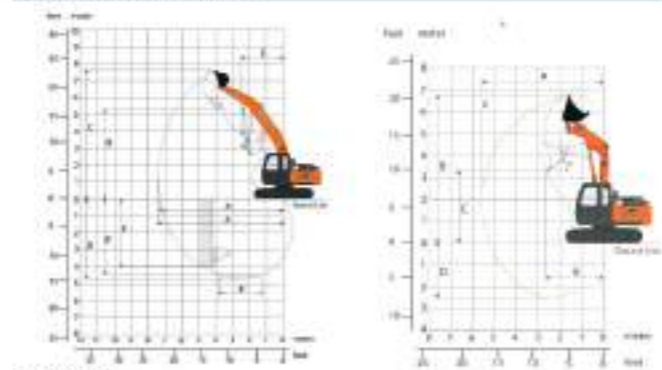
BUCKETS

BACKHOE	SHOVEL			
Bucket type	Capacity (PCSA)	Width without side cutter	Weight	Tooth points
GP	0.60 m ³	1034 mm	478 kg	4
HD	0.52 m ³	890 mm	525 kg	4
Trench	0.23 m ³	480 mm	350 kg	2

SHOVEL

Capacity	Inner width	Outer width	Weight
0.6 m ³	1120 mm	1184 mm	552 kg

WORKING RANGES



BACKHOE

Boom length	4250
Arm length	1950
A Max. digging reach	7410
A' Max. digging reach (on ground)	7250
B Max. digging depth	4720
B' Max. digging depth (6' level)	4460
C Max. cutting height	7630
D Max. dumping height	6280
E Min. swing radius	2460
F Max. vertical wall	4040

SHOVEL

Boom length	2500
Arm length	2000
A Max. digging reach	5560
B Max. cutting height	6750
C Max. dumping height	3290
D Max. digging depth	2620
E Working radius at dumping height	2630

DIMENSIONS



Authorized Dealer

EX Super series

TATA HITACHI

Reliable solutions

EX110



The Workhorse



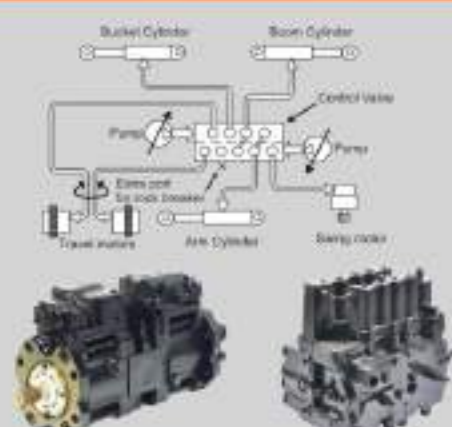
HYDRAULIC EXCAVATOR

Engine Power	76 PS @ 2200 rpm
Operating Weight	
Backhoe	11600 Kg
Shovel	11600 Kg
Bucket Capacity	
Backhoe	0.23 - 0.60 m ³
Shovel	0.60 m ³

EX SUPER



SUPERIOR HYDRAULICS



Hitachi's Optimum Hydraulic System allows for easy, smooth and swift combined operations which translates into a superior machine performance.

Advanced features such as Cross-Sensing Summation System and Fuel Saving Pump System result in higher working speeds and help in eliminating hydraulic energy losses.

Hitachi's original pilot circuit features responsive and precise control.

UNPARALLELED VERSATILITY



EX110 Super series hydraulic excavator, a result of Hitachi's world class design and R&D capability, displays unparalleled versatility in its compatibility with a wide range of attachments and customizations, tailor made for Indian conditions.

A Spare Spool for special attachments is supplied as a part of standard equipment.

POWER OPTIMIZATION



EX110 is powered by the reliable and fuel efficient Tata 697 NA engine delivering 76 PS @ 2200 rpm.

Auto Idle & Auto Deceleration features enable reduction in fuel consumption, thereby lowering operational costs.

Power Mode selection feature helps the operator to select the right engine rpm to match his operating needs, thereby optimizing usage of engine power.

EP mode: Reduced engine speed for light duty operation for enhanced fuel savings.

HP mode: Higher engine power to increase productivity for quicker completion of job.

EFFICIENCY BOOSTERS



- Ergonomically designed roomy cabin with superior visibility
- Reduced engine hood height
- Improved aesthetics
- Hydramounts for cabin mounting
- Wiper with window washer
- Ergonomically designed operator seat with weight adjustment
- New control levers and display monitor
- Dial type throttle control
- FM, USB enables media player with speakers
- Fan and LED light in cabin
- Mobile charger port
- Cyclonic pre-cleaner

RETURN ON INVESTMENT



The EX100/EX110 with an installed base of over 10,000 machines working in a wide variety of applications in various geographies across India, has been commanding the highest resale value in its class.

Auto Idle, Auto Deceleration and Mode Selection result in enhanced fuel savings thereby lowering operation costs.

2500 hrs hydraulic oil change interval reduces the operating cost of the EX110.

The superior design of EX110 Super series hydraulic excavator, ensures ease in serviceability thereby leading to minimal downtime for maintenance resulting in higher profits for customers.