

## SPECIFICATIONS

### ENGINE

Model.....Cummins 6BT5.9C  
 Type.....6 cylinder in-line water cooled  
 Rated fly wheel power.....133 PS @ 2000 rpm  
 Max.torque.....54.8 kgf-m @ 1300 rpm  
 Batteries.....2 X 12 V

### HYDRAULIC SYSTEM

Main pumps.....2 variable displacements axial piston pumps  
 Max. oil flow.....2 X 221 lpm  
 Pilot pump.....1 gear pump  
 Max. oil flow.....20 lpm

### SUPERSTRUCTURE

Swing speed.....13.7 rpm

### RELIEF VALVE SETTINGS

Implement circuit.....285 kgf/cm<sup>2</sup>  
 Swing circuit.....260 kgf/cm<sup>2</sup>  
 Travel circuit.....350 kgf/cm<sup>2</sup>  
 Pilot circuit.....40 kgf/cm<sup>2</sup>

### UNDERCARRIAGE

Travel speeds.....0-4.2 kmph  
 Max.traction force.....15,200 kgf  
 Gradeability.....35<sup>o</sup> (70% continuous)  
 No.of upper rollers.....2  
 No. of lower rollers.....8  
 No. of track shoes.....52  
 Shoe width.....600 mm

### SERVICE REFILL CAPACITIES

Hydraulic tank.....129.0 ltr  
 Hydraulic system.....220.0 ltr  
 Fuel tank.....310.0 ltr  
 Engine coolant.....35.0 ltr  
 Engine oil (Sump).....14.0 ltr  
 Swing device.....7.5 ltr  
 Travel device (Each side).....5.5 ltr

### WEIGHTS AND GROUND PRESSURE

Machine	Operating weight	Ground pressure
Backhoe	20,600 kg	0.44 kgf /cm <sup>2</sup>

### DIGGING FORCES

Bucket digging forces.....11000 kgf

Arm length	1.90 m	2.22 m	2.90 m
Arm digging force	12500 kgf	11300 kgf	8800 kgf

The specifications are subject to change without prior notice. The machine depicted may vary from the actual Machine. Please contact our nearest office for latest specifications. Accessories shown here are not part of the standard equipment. Performance of the machine may vary with site and operating conditions encountered.

### Tata Hitachi Construction Machinery Company Private Limited

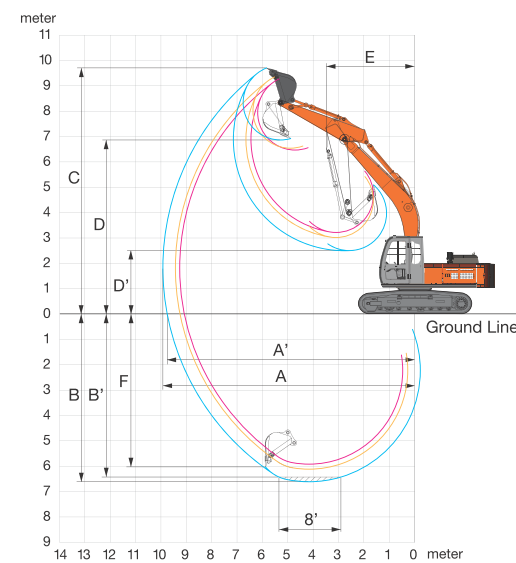
Registered Office : Jubilee Building 45 Museum Road Bangalore 560 025 India  
 Telephone : +91 80 66953301 02 03 04 05 Fax : +91 80 66953309 25325792  
 E-mail : info@tatahitachi.co.in Website : www.tatahitachi.co.in

Toll Free: 1800 3456 500

### BUCKETS

Capacity	Width without side cutter	Weight (approx.)	Tooth points
0.80 m <sup>3</sup>	997 mm	902 kg	4
0.91 m <sup>3</sup>	1150 mm	741 kg	5
1.20 m <sup>3</sup>	1450 mm	690 kg	-
1.5 m <sup>3</sup>	1780 mm	567 kg	-

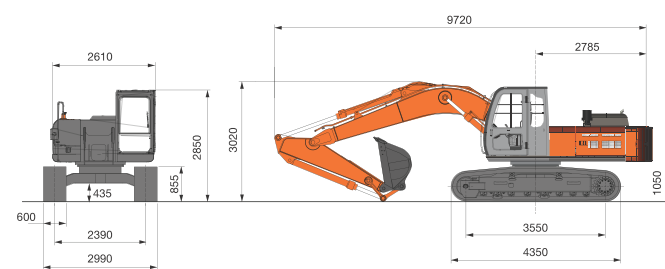
### WORKING RANGES



	Boom length	5680		
	Arm length	1900	2220	2900
A	Max. digging reach	9110	9250	9910
A'	Max. digging reach (on ground)	8920	9060	9740
B	Max. digging depth	5580	5910	6600
B'	Max. digging depth (8' level)	5340	5670	6420
C	Max. cutting height	9340	8990	9400
D	Max. dumping height	6480	6230	6610
E	Min. swing radius	4010	3720	3660
F	Max.vertical wall depth	4950	5050	5980

All dimensions are in mm

### DIMENSIONS



All dimensions are in mm

## EX Super series

# TATA HITACHI

Reliable solutions

## EX210Lc



*The Super Advantage*



### HYDRAULIC EXCAVATOR

Engine Power : 133 PS @ 2000 rpm

Operating Weight : 20600 kg

Bucket Capacity : 0.8 - 1.5 m<sup>3</sup>



Cushioned cylinders

Reinforced boom-end bracket

Robotically welded, heavy-duty, reinforced boom, arm and structures

Damage prevention square bars on arm bottom

Reinforced arm plate

Larger pin diameter

Stronger reinforced bucket and variety of attachments for diverse applications

Front grill

Wiper and window washer

Reinforced idler mounting frame  
Hardened lifetime lubricated idlers and forged idler bearing

High temperature hoses and seals

Larger boss diameter

Ergonomically designed controls and work station with mode selection

Superior visibility roomy cabin with air conditioner

Powerful Cummins 6BT5.9C engine

Cyclonic pre cleaner

Aluminium oil cooler improved cooling efficiency and reduced engine hood height

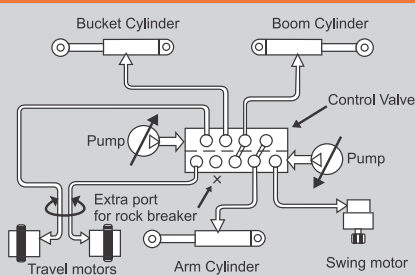
Advanced hydraulics with Optimum Hydraulic System

Electronic Auto Idle and default Auto Deceleration

Long Crawler undercarriage for low ground pressure

Dual track gaurds

### SUPERIOR HYDRAULICS



Hitachi's original **Optimum Hydraulic System** allows for easy, smooth and swift combined operations which translates into a superior machine performance.

Advanced features such as **Cross-Sensing Summation System** and **Fuel Saving Pump System** result in higher working speeds and help in eliminating hydraulic energy losses.

### UNPARALLELED VERSATILITY



EX210LC Super series hydraulic excavator, a result of Hitachi's world class design and R&D capability, displays unparalleled versatility in its compatibility with a wide range of attachments and customizations, tailor made for Indian conditions.

**A Spare Spool** for special attachments is supplied as a part of standard equipment.

### POWER OPTIMIZATION



EX210LC is powered by the reliable & fuel efficient **Cummins 6BT5.9C** engine delivering 133 PS @ 2000 rpm.

**Auto Idle & Auto Deceleration** features enable reduction in fuel consumption, thereby lowering operational costs.

**Power Mode selection** feature helps the operator to select the right engine rpm to match his operating needs, thereby optimizing usage of engine power.

**EP mode:** Reduced engine speed for light duty operation for enhanced fuel savings.

**HP mode:** Higher engine power to increase productivity for quicker completion of jobs.



### EFFICIENCY BOOSTERS



- Ergonomically designed roomy cabin with superior visibility
- Aluminium oil cooler for better cooling
- Reduced engine hood height
- Sleek counterweight
- Hydramounts for cab mounting
- Ergonomically designed operator seat with weight adjustment
- New control levers and display monitor
- FM, USB enabled media player with speakers
- Fan and LED light in cabin
- Dial type throttle control
- **Air conditioned cab**
- Mobile charger port
- Cyclonic pre cleaner

### RETURN ON INVESTMENT



EX200LC / EX210LC with an installed base of over 20,000 machines working in a wide variety of applications in various geographies across India, has been commanding the **highest resale value in its class.**

**Auto Idle & Auto Deceleration, Mode Selection** resulting in fuel saving thereby lowering operational costs.

EX210LC increases the profitability with minimal downtime for maintenance due to its superior design leading to **ease in serviceability.**

**2500 Hrs Hydraulic Oil Change Interval** further reduces the operating cost of EX210LC.