

EX Super series

TATA HITACHI

Reliable solutions

EX200Lc

The Most Popular Excavator



HYDRAULIC EXCAVATOR

Engine Power : 133 PS @ 2000 rpm

Operating Weight

EX 200 LC Backhoe : 20000 kg

EX 210 LC Backhoe : 20600 kg

EX 200 LC Shovel : 20150 kg

Bucket Capacity

Backhoe : 0.8 - 1.5 m³

Shovel : 1.2 m³



Cushioned cylinders

Reinforced boom-end bracket

Damage prevention square bars on Arm bottom Robotically welded, heavy-duty, reinforced boom, arm and structures

Reinforced arm plate

Larger pin diameter

Stronger reinforced bucket and variety of attachments for diverse applications

Seat screw for front grill

Wiper and window washer

Reinforced idler mounting frame
Hardened lifetime lubricated idlers and forged idler bearing

High temperature hose and seals

Larger boss diameter

Ergonomically designed controls and work station with mode selection

Superior visibility roomy cab with optional air conditioner

Powerful Cummins 6BT5-9C engine

Turbo pre-cleaner

Aluminium Oil Cooler for improved cooling efficiency and reduced engine hood height

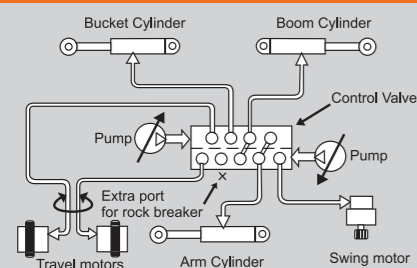
Advanced hydraulics with Optimum Hydraulic System

Electronic Auto Idle and default Auto Deceleration

Long Crawler undercarriage for low ground pressure

Dual track guards

SUPERIOR HYDRAULICS



Hitachi's original **Optimum Hydraulic System** allows for easy, smooth and swift combined operations which translates into a superior machine performance.

Advanced Features such as the **Fuel Saving Pump System** and **Cross - Sensing Summation System** help in higher working speeds.

Spare Spool for special attachments is supplied as a part of Standard equipment.

UNPARALLELED VERSATILITY



The **EX200LC Super**, a result of years of Hitachi's world class design and R&D expertise displays unparalleled versatility in its compatibility with a wide variety of attachments tailor made to match the Indian operating conditions.

POWER OPTIMIZATION



EX200LC Super is powered by reliable & fuel efficient **Cummins 6BT5.9C** engine, now delivering **133 PS @ 2000 rpm**.

Power Mode selection feature makes optimum use of the engine power by sensing the changes in the engine speed that occur with each new load.

Auto Idle & Auto Deceleration features provide an increased saving in fuel, thereby lowering operational costs.

EP Mode : Reduced engine speed for light duty operation for fuel savings, without compromising on production

HP Mode : Higher engine power to increase productivity for quicker completion of job



EFFICIENCY BOOSTERS



- Ergonomically designed roomy cabin with superior visibility
- Aluminium Oil Cooler for better cooling
- Reduced engine hood height
- Sleek counterweight
- Hydramounts for cab mounting
- Ergonomically designed operator seat with weight adjustment
- Control levers and all new display monitor
- FM, USB enabled media player with speakers
- LED light and cabin fan
- Dial type throttle
- **Air conditioned** cab as optional extra

RETURN ON INVESTMENT



EX200LC with an installed base of over 20,000 machines working in a wide variety of applications and in various geographies across India, has been commanding the **highest resale value in its class**.

Auto Idle & Auto Deceleration, Mode Selection resulting in fuel saving thereby lowering operational costs.

EX200LC Super increases the profitability with minimal downtime for maintenance due to its superior design leading to **ease in serviceability**.

2500 Hrs Hydraulic Oil Change Interval further reduces the operating cost of EX200LC Super.

SPECIFICATIONS

ENGINE

Model.....Cummins 6BT5-9C
 Type.....6 cylinder in-line water cooled
 Rated fly wheel power.....133 PS @ 2000 rpm
 Max.torque.....54.8 kgf-m @ 1300 rpm
 Batteries.....2 X 12 V

HYDRAULIC SYSTEM

Main pumps.....2 variable displacements axial piston pumps
 Max. oil flow.....2 X 221 lpm
 Pilot pump.....1 gear pump
 Max. oil flow.....20 lpm

SUPERSTRUCTURE

Swing speed.....13.7 rpm

RELIEF VALVE SETTINGS

Implement circuit.....285 kgf/cm²
 Swing circuit.....285 kgf/cm²
 Travel circuit.....350 kgf/cm²
 Pilot circuit.....40 kgf/cm²

UNDERCARRIAGE

Travel speeds.....0-4.2 kmph
 Max.traction force EX200LC.....15,300 kgf
 EX210LC.....15,200 kgf
 Gradeability.....35^o (70% continuous)
 No.of upper rollers.....2
 No. of lower rollers.....8
 No. of track shoes.....52
 Shoe width EX200LC.....500 mm
 EX210LC.....600 mm

SERVICE REFILL CAPACITIES

Hydraulic tank.....129.0 ltr
 Hydraulic system.....220.0 ltr
 Fuel tank.....310.0 ltr
 Engine coolant.....35.0 ltr
 Engine oil (Sump).....14.0 ltr
 Swing device.....7.5 ltr
 Travel device (Each side).....5.5 ltr

WEIGHTS AND GROUND PRESSURE

| Machine | Operating weight | Ground pressure |
|-----------------|------------------|---------------------------|
| EX200LC Backhoe | 20,000 kg | 0.52 kgf /cm ² |
| EX210LC Backhoe | 20,600 kg | 0.44 kgf /cm ² |
| EX200LC Shovel | 20,150 kg | 0.52 kgf /cm ² |

DIGGING FORCES

BACKHOE

Bucket digging forces.....11000 kgf

| | | | |
|-------------------|-----------|-----------|----------|
| Arm length | 1.90 m | 2.22 m | 2.90 m |
| Arm digging force | 12500 kgf | 11300 kgf | 8800 kgf |

SHOVEL

Arm crowding force.....12500 kgf
 Bucket breakout force.....16400 kgf

BUCKETS

BACKHOE

| Capacity | Width without side cutter | Weight (approx.) | Tooth points |
|---------------------|---------------------------|------------------|--------------|
| 0.80 m ³ | 997 mm | 902 kg | 4 |
| 0.91 m ³ | 1150 mm | 741 kg | 5 |
| 1.20 m ³ | 1450 mm | 690 kg | - |
| 1.5 m ³ | 1780 mm | 567 kg | - |

The Specifications are subject to change without prior notice. The Machine depicted may vary from the actual Machine Please contact our nearest office for latest specifications. Accessories shown here are not part of the standard equipment Performance of the machine may vary with site and operating conditions encountered

Tata Hitachi Construction Machinery Company Limited

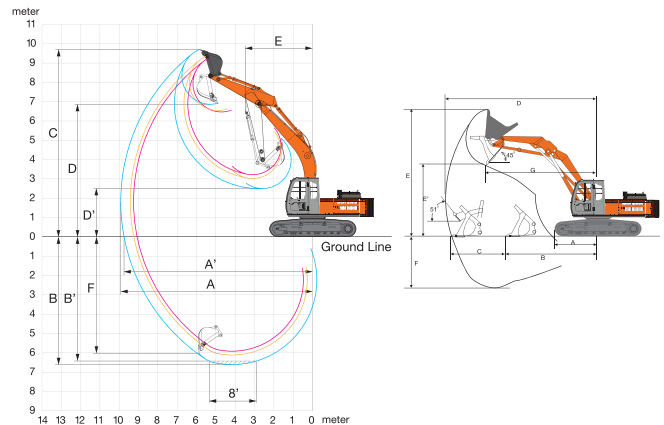
Registered Office : Jubilee Building 45 Museum Road Bangalore 560 025 India
 Telephone : +91 80 66953301 02 03 04 05 Fax : +91 80 66953309 25325792
 E-mail : info@tatahitachi.co.in Website : www.tatahitachi.co.in

Toll Free: 1800 3456 500

SHOVEL

| Capacity | Inner width | Outer width | Weight |
|--------------------|-------------|-------------|--------|
| 1.2 m ³ | 1500 mm | 1570 mm | 900 kg |

BACKHOE AND SHOVEL ATTACHMENT



WORKING RANGES

BACKHOE

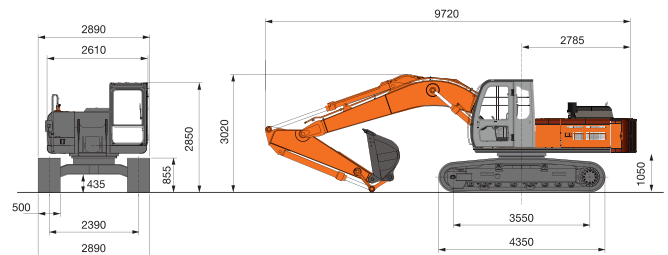
| | Boom length | 5680 | | |
|----|--------------------------------|------|------|------|
| | Arm length | 1900 | 2220 | 2900 |
| A | Max. digging reach | 9110 | 9250 | 9910 |
| A' | Max. digging reach (on ground) | 8920 | 9060 | 9740 |
| B | Max. digging depth | 5580 | 5910 | 6600 |
| B' | Max. digging depth (8' level) | 5340 | 5670 | 6420 |
| C | Max. cutting height | 9340 | 8990 | 9400 |
| D | Max. dumping height | 6480 | 6230 | 6610 |
| E | Min. swing radius | 4010 | 3720 | 3660 |
| F | Max. vertical wall depth | 4950 | 5050 | 5980 |

SHOVEL

| | Boom length | 3100 |
|----|---------------------------------------|------|
| | Arm length | 2850 |
| A | Min. digging distance | 2575 |
| B | Min. level crowding distance | 4340 |
| C | Level crowding distance | 2580 |
| D | Max. digging reach | 7200 |
| E | Max. cutting height | 6390 |
| E' | Max. dumping height | 3600 |
| F | Max. digging depth | 2450 |
| G | Working radius at max. dumping height | 5200 |

All dimensions are in mm

DIMENSIONS



All dimensions are in mm and are shown for EX200LC

Authorised Dealer