

ZAXIS series

TATA HITACHI

Reliable solutions

ZAXIS 120 H



***The New Age Excavator for
Best in Class Performance***



HYDRAULIC EXCAVATOR

Engine Power : 90 PS @ 2150 rpm
Operating Weight : 12800 kg
Bucket Capacity : 0.19 - 0.70 m³

SPECIFICATIONS

ENGINE

Model.....Isuzu CC-4BG1TC
 Type.....Water-cooled, direct injection
 Aspiration.....Turbocharged, Intercooled
 Rated power.....90 PS @ 2150 rpm
 Maximum torque.....35 kgfm @ 600 rpm

HYDRAULIC SYSTEM

Main pumps.....2 variable displacements axial piston pumps
 Max. oil flow.....2 X 105 lpm
 Pilot pump.....1 gear pump
 Max. oil flow.....33 lpm

SUPERSTRUCTURE

Swing speed.....13.7 rpm

RELIEF VALVE SETTINGS

Implement circuit.....350 kgf/cm²
 Swing circuit.....330 kgf/cm²
 Travel circuit.....350 kgf/cm²
 Pilot circuit.....40 kgf/cm²

UNDERCARRIAGE

Travel speeds.....0-5.5 kmph
 0-3.4 kmph
 Max.traction force.....10400 kgf
 Gradeability.....35° (70% continuous)

SERVICE REFILL CAPACITIES

Hydraulic tank.....69.0 ltr
 Hydraulic system.....130.0 ltr
 Fuel tank.....250.0 ltr
 Engine coolant.....19.0 ltr
 Engine oil.....15.8 ltr
 Travel device (Each side).....4.0 ltr
 Swing mechanism.....3.2 ltr

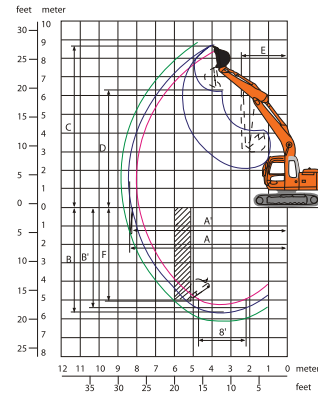
BUCKETS

Capacity	Width without side cutter	Width with side cutter	Weight	Tooth points
0.70 m ³	1066 mm	1186 mm	584 kg	5 (GP)
0.45 m ³	802 mm			4 (HD)

WEIGHTS AND GROUND PRESSURE

Shoe type	Shoe width	Operating weight	Ground pressure
Triple grouser	500 mm	12800 kg	0.38 kgf /cm ²

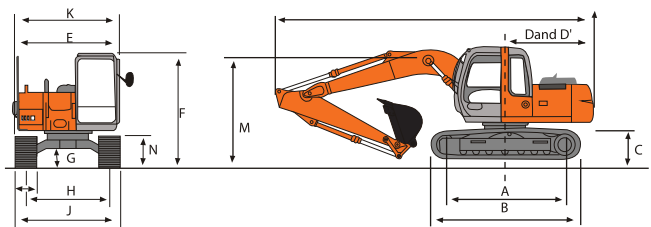
WORKING RANGES



A	Max. digging reach	7900
A'	Max. digging reach (on ground)	7770
B	Max. digging depth	5150
B'	Max. digging depth (8' level)	4910
C	Max. cutting height	8370
D	Max. dumping height	5960
E	Min. swing radius	2310
F	Max. vertical wall	4650
	Bucket digging force	10100 kgf
	Arm crowd force	7500 kgf

All Dimensions are in mm

DIMENSIONS



BACKHOE		
	Boom length	4600
	Arm length	2100
A	Distance between tumbies	2880
B	Under carriage length	3580
*C	Counterweight clearance	890
D	Rear-end swing radius	2130
D'	Rear-end length	2130
E	Overall width of upperstructure	2460
F	Overall height of cab	2740
*G	Min. ground clearance	440
H	Track gauge	1990
I	Track shoe width	500
J	Undercarriage width	2490
K	Overall width	2500
L	Overall length	7610
M	Overall height of boom	2580
N	Track height with triple grauser shoes	790

All dimensions are in mm

The Specifications are subject to change without prior notice. The Machine depicted may vary from the actual Machine Please contact our nearest office for latest specifications. Accessories shown here are not part of the standard equipment Performance of the machine may vary with site and operating conditions encountered

Tata Hitachi Construction Machinery Company Limited

Registered Office : Jubilee Building 45 Museum Road Bangalore 560 025 India
 Telephone: +91 80 66953301 02 03 04 05 Fax: +91 80 66953309 25325792

Toll Free: 1800 3456 500



Authorised Dealer