

SPECIFICATIONS

ENGINE

Model.....Mitsubishi 6B6-TA61MHTA
 Type.....4-cycle water-cooled, direct injection
 Aspiration.....Turbocharged (with charged air cooler)
 No. of cylinders.....6
 Rated power.....163 PS (120 kW) @ 2000 rpm
 Full Load.....155 PS (114 kW) @ 1800 rpm
 Maximum torque.....655 Nm @ 1500 rpm
 Piston displacement.....6.494 L
 Bore and stroke.....102 mm x 125 mm
 Batteries.....2 x 12 V / 88 Ah

HYDRAULIC SYSTEM

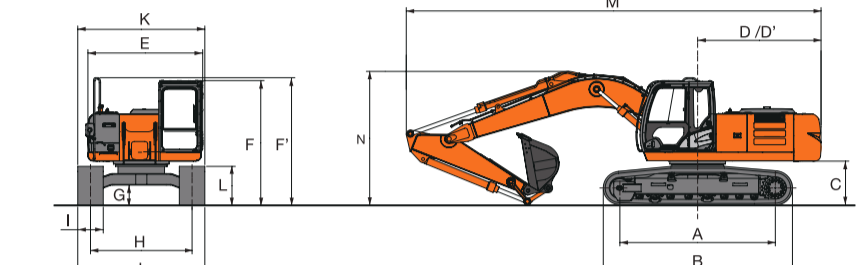
Hydraulic Pumps
 Main pumps.....2 variable displacement axial piston pumps
 Maximum oil flow.....2 x 212 L/min
 Pilot pump.....1 gear pump
 Maximum oil flow.....33.6 L/min
Relief Valve Settings
 Implement circuit.....350 kgf/cm² (34.3 MPa)
 Swing circuit.....310 kgf/cm² (30.4 MPa)
 Travel circuit.....350 kgf/cm² (34.3 MPa)
 Pilot circuit.....40 kgf/cm² (3.9 MPa)
 Power boost.....388 kgf/cm² (38.0 MPa)

BACKHOE ATTACHMENTS

Capacity	Width		No. Of teeth	Weight	Recommendation		
	With side cutters	Without side cutters			ZX220 LC-M (STD / QR)	2.2 m arm	2.42 m arm
0.90 m ³ (HD)	—	1 009 mm	5	944 kg	●	—	—
0.90 m ³ (GR)	—	1 008 mm	4	925 kg	○	—	—
1.00 m ³	1 340 mm	1 230 mm	6	804 kg	○	○	—
0.90 m ³ (GP)	1 240 mm	1 130 mm	5	769 kg	○	○	—
0.45 m ³	810 mm	720 mm	3	535 kg	○	○	○

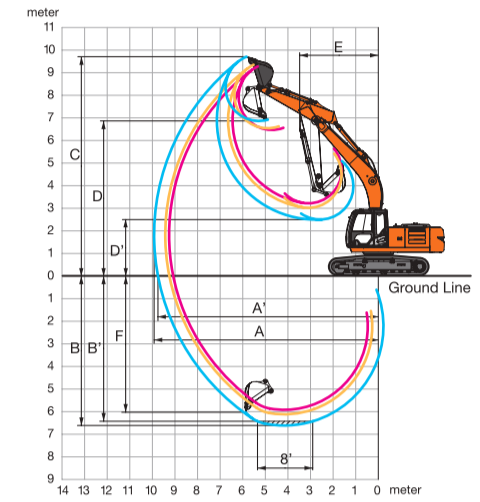
● Suitable for materials with density of 2 000 kg/m³ or less ○ Suitable for materials with density of 1 600 kg/m³ or less ● Heavy-duty service — Not applicable

DIMENSIONS



	ZX220 LC-M (STD / QR)	ZX220 LC-M (STD / QR)
A Distance between tumbler	3 660	3 300
B Undercarriage length	4 460	2 990
C Counterweight clearance	1 040	920
D Rear-end swing radius	2 910	9 760
E Overall width of upperstructure	2 700	9 680
F Overall height of cab	2 940	3 150
G Min. ground clearance	450	3 010
H Track gauge	2 390	3 050
I Track shoe width	600	3 050

WORKING RANGES



Arm length	2.20 m	2.42 m	2.91 m
A Max. digging reach	9 260	9 430	9 920
B Max. digging depth (on ground)	5 920	6 120	6 610
C Max. cutting height	9 250	9 330	9 680
D Max. dumping height	3 210	3 010	2 490
E Min. swing radius	3 530	3 520	3 490
F Max. vertical wall digging depth	5 420	5 520	6 030

BUCKET AND ARM DIGGING FORCES

Arm length	2.22 m	2.42 m	2.91 m
Bucket digging force* ISO	158 kN (16 100 kgf)	158 kN (16 100 kgf)	158 kN (16 100 kgf)
Arm crowd force* ISO	147 kN (15 000 kgf)	139 kN (14 200 kgf)	114 kN (11 600 kgf)

* At power boost
 The specifications are subject to change without prior notice. The machine depicted may vary from the actual Machine. Please contact our nearest office for latest specifications. Accessories shown here are not part of the standard equipment. Performance of the machine may vary with site and operating conditions encountered.

Tata Hitachi Construction Machinery Company Limited

Registered Office : Jubilee Building 45 Museum Road Bangalore 560 025 India
 Telephone: +91 80 66953301 02 03 04 05 Fax: +91 80 66953309 25325792
 E-mail: info@tatahitachi.co.in Website: www.tatahitachi.co.in
 Toll Free: 1800 3456 500



ZAXIS GI series

TATA HITACHI

Reliable solutions

ZAXIS220LC-M



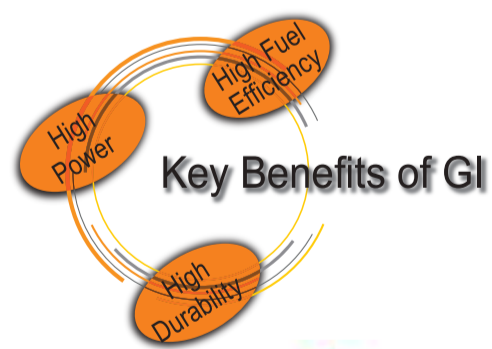
HYDRAULIC EXCAVATOR

Model Code : ZX220 LC-M (STD) / ZX220 LC-M (QR)
 Engine Rated Power : 163 PS (120 kW)
 Operating Weight : ZX220 LC-M (STD) : 20900 kg
 ZX220 LC-M (QR) : 21700 kg
 Backhoe Bucket : ISO Heaped : 0.45 - 1.0 m³



More Production with Less Fuel

- 10% Reduction in Fuel Consumption
- More Fuel Reduction in the ECO mode
- Swift Front Movements with HIOS™ III Hydraulics
- Powerful Lifting Operation
- Boosted Swing Torque
- Enhanced Power Boost
- Easy-to-Use Attachments



Remote Fleet Management with Global e-Service

Global e-Service provides easy access to a machine on site, conveying operating information and log, including machine location, daily operating hours, fuel level, temperatures, pressures and likes.

Machine location
 Working site of customer machine can be determined.
 Route to working site of customer machine can be determined also.

Alarm function
 Information of alarms as causes of machine failures can be received in real time.

Hour meter / Daily report
 Daily machine operation hours and remaining fuel can be determined.

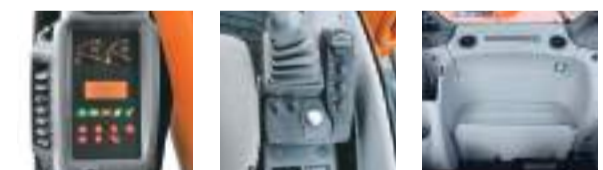
Operation information
 Hydraulic oil temperature, swing hours and other data are determined.



No Compromise on Operator Comfort

- Comfortable Operating Environment
- Comfort-Designed Operator Seat
- Robust Cab

The robust cab, meeting the OPG (Top Guard Level 1), protects the operator from falling objects. The pilot control shut-off lever is provided with a neutral engine start system that permits engine starting only when the pilot control shut-off lever is in Lock position.



Rock-Solid, Durable Front Attachment

The boom top and foot are reinforced with thickened high-tensile steel brackets, which incorporate steel bushings to enhance durability. Arm cylinder and boom cylinders (rod extend ends) cushion shocks at stroke ends to cut noise and extend service life.

Joint pins at the front attachment are tightly fit to reduce jolt and sound. The arm-bucket joint is protected by WC thermal spraying on its contact surfaces to reduce wear and jolt. New-type steel bushings, utilized on joint pins, retain grease inside for longer greasing intervals. A reinforced resin thrust plate, mounted on the bucket pin, helps reduce wear and noise.



Strengthened Undercarriage

The X-beam frame is made monolithically with fewer welds for higher rigidity and durability.

Track adjusters absorb impacts to crawlers. Front idlers and adjuster cylinders are integrated to increase durability. Idler brackets and travel motor brackets are both thickened for added durability.

Durable, Reliable Engine

This engine has a track record showing impressive durability at countless tough job sites around the world.

The engine - associated with a rugged design, a direct fuel injection system and an elaborate governor - goes green, and complies with EU Stage II and US EPA Tier 2 emissions regulations.

The ample-capacity intercooler and turbocharger help yield a whopping 163 PS (120 kW) output for higher production in shorter job schedule.